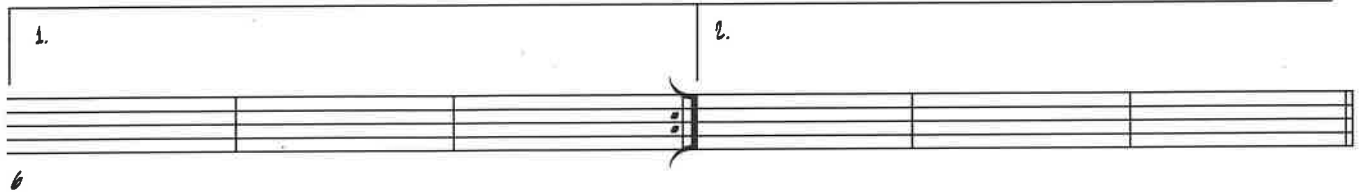
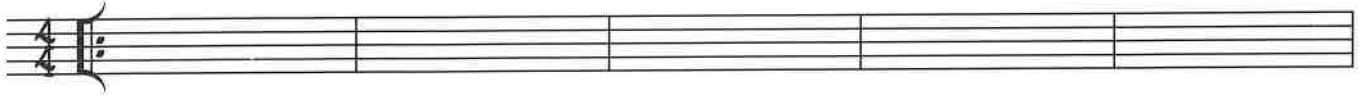


USE THIS PAGE TO WRITE
THE CHANGES, GUIDETONES,
AND SCALE/ARPEGGIOS FOR USING WHILE SOLOING

AUTUMN LEAVES

GUIDE TONE/SCALE/ARPEGGIO WORKSHEET

CHORUS 1



6



12



16



20



24

- Write in the correct chord changes, using the clef and key for your instrument.
- Write in all 3rds + 7ths of all chords using good voice leading
- Draw an arrow connecting movements from 7s to 3rds.

AUTUMN LEAVES

USE THIS PAGE TO WRITE
THE CHANGES, GUIDETONES,
AND SCALE/ARPEGGIOS FOR USING WHILE SOLOING

GUIDE TONE/SCALE/ARPEGGIO WORKSHEET

CHORUS 1

Handwritten guitar chord chart for "Autumn Leaves" Chorus 1. The chart is written in 4/4 time and consists of 24 measures. It features two systems of three staves each. The first system covers measures 1-6, and the second system covers measures 7-12. The third system covers measures 13-18, and the fourth system covers measures 19-24. Chords are written above the staves, and arpeggios with fingerings (7, 3) are written below. Measure numbers 6, 12, 18, and 24 are marked at the beginning of their respective staves. The key signature is one flat (B-flat major/E-flat minor).

Measures 1-6: C-7, F7, BbMaj7, EbMaj7, Aø7, D7, G-7, D7, G-7, G-7.

Measures 7-12: Aø7, D7, G-7, C7, F-7, Bb7.

Measures 13-18: C-7, F7, BbMaj7, EbMaj7, Aø7, D7, G-7, C7, F-7, Bb7.

Measures 19-24: Aø7, D7, G-7, C7, F-7, Bb7.